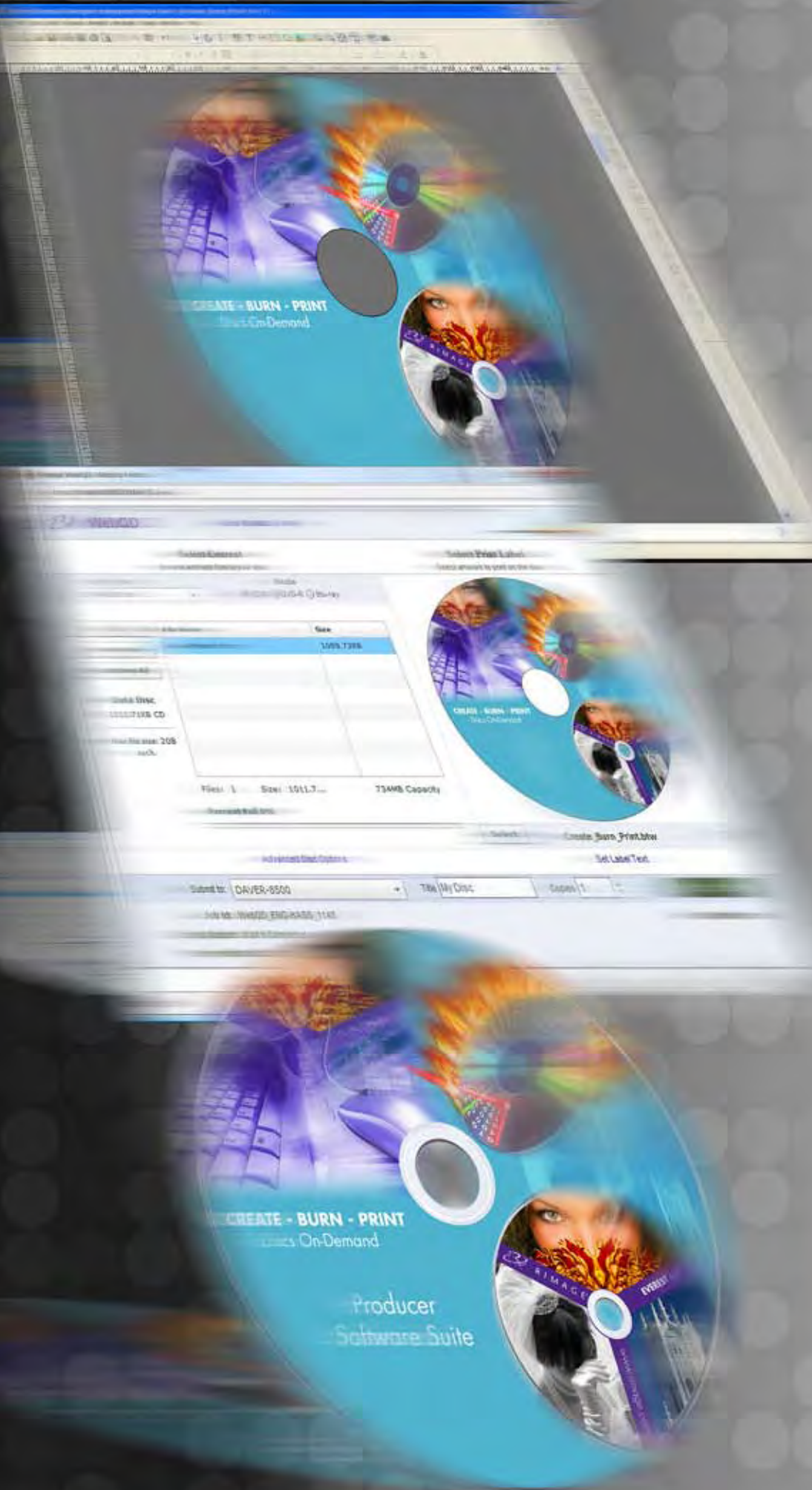


Rimage® Software Suite



R I M A G E®

Rimage Software Applications:

QuickDisc and WebQD

QuickDisc and WebQD are applications that enable job preparation, submission, and monitoring. Easily select job type, drag-and-drop disc content, choose labels, preview, and submit.

DiscFlow

DiscFlow is a Macintosh® application enabling easy job preparation, submission, and monitoring. Select your job type, drag-and-drop your content, choose your label, preview, and submit.

CD Designer

CD Designer is an application for Windows® based operating systems used to easily design custom professional looking artwork that is printed directly on the surface of your discs.

Rimage System Manager or (WebRSM)

Rimage System Manager or (WebRSM) enable you to fully control and monitor your Rimage systems from anywhere on the network. Using RSM or WebRSM you can monitor status of your jobs, get accurate disc and media volume status, and control functionality.



Optional Software Add-ons

Rimage Video Protect

Rimage Video Protect is ideal for anyone creating video DVDs, to protect against unauthorized duplication. RVP's proprietary DVD copy control technology helps film studios and production companies protect their assets. Copy controlled discs have full DVD playability matching that of unprotected DVD's. Menus, special features and extras remain unaffected.



Rimage Archiver for P2 HD

Safe, Portable Storage of Panasonic P2 Card Files

Rimage Archiver for P2 HD is a fully integrated plug-in for offloading and archiving Panasonic P2 HD content and is exclusively available on Rimage Professional™ and Producer™ III series of Blu-ray disc and DVD disc publishers.



30 Years of Innovation

With over 30 years of media publishing experience, multiple patents in disc-based publishing, and generations of software, Rimage is the industry leader in professional disc publishing equipment. All software and hardware is designed and built by Rimage to provide industry leading performance, functionality and reliability. Rimage provides the easiest, most efficient and reliable on-demand disc publishing systems in the world.

World Class Software

Key to all world class hardware products is software. Rimage software is a major differentiator when it comes to disc-publishing systems. When it comes to ease of use, functionality, performance, or workflow integration, Rimage software leads the industry with the most robust and flexible software suite.

Design - Burn - Print

Professional disc production made easy

Rimage's 1-2-3 workflow makes disc production easy for any user:

1. Easily and quickly design labels using CD Designer™
2. Burn and Print your CD/DVD/Blu-ray disc™ using QuickDisc or DiscFlow™
3. Monitor the status of your workflow using Rimage System Manager or WebRSM™



Use Rimage Systems and Software to create your own business solutions. Design full color artwork, burn content, and print in no time!

Customer Advantages

Performance

The overall performance of a disc-publishing system is largely determined by software, not the total number of recorders. Rimage's patented software technology provides:

- **Fastest First-Disc-Out** via Rimage's patented Adaptive Streaming™ technology
- **Fastest Overall Throughput** via Rimage's parallel processing of jobs

Productivity

Rimage has developed software to ensure your workflow and software integration is easy and intuitive. Rimage applications and tools can be used anywhere on the network and its Software Development Kit (SDK) makes software development a snap.

- **CD Designer, QuickDisc and DiscFlow** – tools enable the easiest disc publishing in the industry
- **Software Development Kit** – the most robust disc publishing SDK on the market
- **Optional Software Applications** – Rimage Video Protect and Rimage Archiver for P2 HD

Reliability

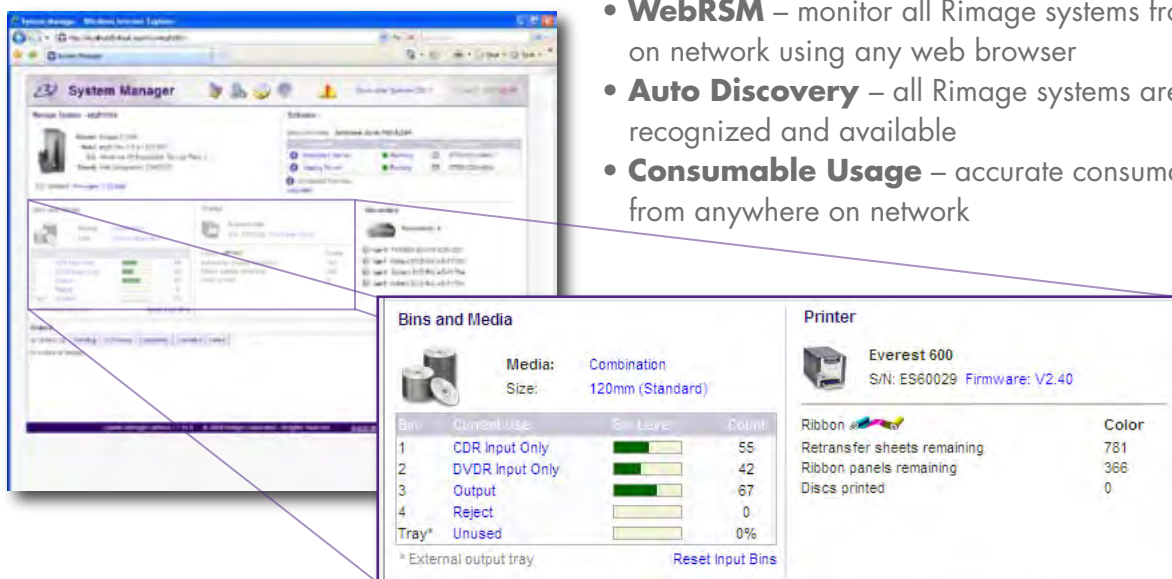
Reliability of a disc-publishing system in professional environments is paramount. Rimage's industry leading reliability not only includes system dependability but also, recorded disc quality, disc labeling quality, and error recovery.

- **Disaster Recovery** – Guaranteed delivery of disc output – even if there is a power failure
- **Highest system up-time** – Most reliable system in the industry
- **Totally integrated system** – All software and hardware developed by Rimage
- **Highest quality ribbons and media** – All Rimage ribbons and media are guaranteed

Manageability

Rimage digital publishing systems are fully networked appliances so anyone in your organization can create discs or monitor the system from anywhere on the network.

- **WebRSM** – monitor all Rimage systems from anywhere on network using any web browser
- **Auto Discovery** – all Rimage systems are automatically recognized and available
- **Consumable Usage** – accurate consumable monitoring from anywhere on network



art Software

Integrator Advantages

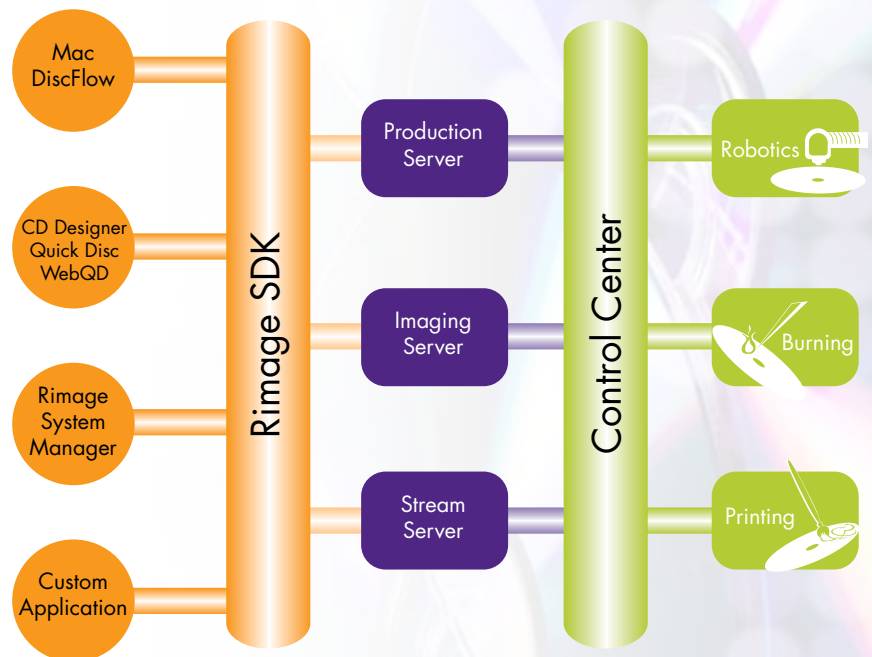
Seamless Integration with End-User Applications

A seamless integration into existing workflows and information systems makes it easier to automate and produce discs, saving time and money. Rimage provides a robust software development kit to simplify integration of end-user applications with Rimage hardware. The Rimage SDK enables solution providers to create disc publishing solutions with:

- Professional artwork
- Disaster Recovery
- Fastest first-disc-out and throughput
- Accurate consumable monitoring
- Hands-free operation
- System status monitoring

Rimage Software Development Kit

Rimage's extensive Software Development Kit is a set of tools to simplify the integration of Rimage systems with end-user applications. Rimage provides application programming interfaces to simplify solution integration and development. In addition, Rimage has a dedicated group of solutions engineers to help your development team bring solutions to life.



Rapid Application Programming Interface

The Rimage Rapid API simplifies integration of end-user applications with Rimage system making it painless for application developers to create custom end-user disc publishing solutions. The Rapid API encapsulates the Client API into an easier to use interface that reduces hardware and software integration to days instead of weeks.

Rimage Web Services

Rimage Web Services complement the existing Rimage APIs by offering another integration path into the Rimage system. The Rimage Web Services provides a SOAP interface to Rimage systems allowing job submission, order status and system status retrieval.

Rimage Web Services software enables solution providers the ability to create web applications that interact with Rimage hardware on a network or across the internet, eliminating the need for separate client applications.

Rimage Products



Professional™ Series

- Perfect for low to medium volume output
- CD, DVD, and Blu-ray Disc recording
- Embedded control centers
- Full color or monochrome printing options
- Available with 1 or 2 recorders



Producer™ III Series

- Perfect for high volume/industrial output
- CD, DVD, and Blu-ray Disc recording
- Embedded control centers
- Full color or monochrome printing options
- Available with 1, 2, or 4 recorders



Software Subscription and Support

As the world's largest full-line provider of CD, DVD, and Blu-ray Disc digital publishing systems, Rimage understands the daily challenges of continuous, high-capacity, on-demand disc production. Rimage digital publishing systems are designed for the most demanding applications - and so is the world-wide service organization. Rimage offers maintenance agreements and software subscription and support agreements to meet your every need.

Rimage Corporation

7725 Washington Avenue South
Minneapolis, Minnesota 55439 USA
Toll Free: 800.445.8288
Tel: 952.944.8144
Fax: 952.944.7808
www.rimage.com

Rimage Europe

Rimage Europe GmbH
Albert-Einstein-Strasse 26
63128 Dietzenbach, Germany
Tel: (49) (0) 6074 8521 0
Fax: (49) (0) 6074 8521 100
www.rimage.de

Rimage Asia/Pacific

Rimage Japan Co., Ltd.
2F, WIND Bldg.
7-4-8 Roppongi Minato-ku,
Tokyo 106-0032 JAPAN
Tel: +81.3.5771.7181
Fax: +81.3.5771.7185
www.rimage.co.jp

