



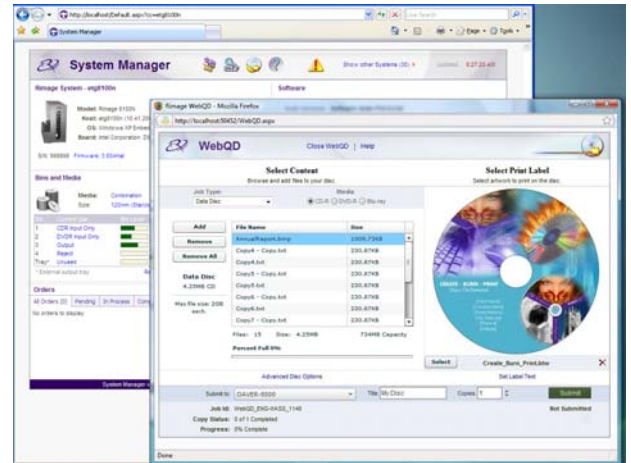
ON-DEMAND DIGITAL PUBLISHING™

## Rimage Producer™ Software Suite Version 8.2

### I. Overview

Rimage announces the release of Producer Software Suite v8.2 (PSS v8.2) for use with Rimage Professional™ and Producer series products. PSS v8.2 software offers several new features:

- WebQD™ Interface
- Windows® WatchFolders
- Compatibility with Windows Vista™
- QuickDisc Enhancements



### CONTENTS

- I. Overview
- II. WebQD
- III. WatchFolders
- IV. Vista Support
- V. QuickDisc Enhancements
- VI. Additional Features
- VII. Sales Messages
- VIII. Availability & Contact Info

### II. WebQD Interface

WebQD, a browser-based interface used to publish discs, enables users to easily burn and print data discs or pre-mastered content on CD, DVD, or Blu-ray discs™ (BD) from anywhere on the network. Users no longer need to install a client application in order to publish discs.

### III. Windows WatchFolders

WatchFolders are now available for both Windows and Macintosh® platforms. They enable users to effortlessly burn and print jobs without the need for any programming or client application interaction. Users simply copy their image, label, and merge text files to the WatchFolder and discs are automatically burned and printed. WatchFolders enable users to seamlessly integrate Rimage output with applications from Avid®, Adobe®, Apple®, and many others.

### IV. Windows Vista Compatibility

- PSS v8.2 is supported on Windows XP® Professional SP3, Windows Vista® Business SP1, Windows Vista Enterprise SP1, Windows Vista Ultimate SP1, and Windows Server 2003 SP2.
- PSS v8.2 is not supported on 64 bit versions of any Windows Operating Systems.

ON-DEMAND DIGITAL PUBLISHING™

Call Rimage Toll Free at 800.445.8288



www.rimage.com

---

## V. QuickDisc Enhancements

Rimage QuickDisc features have expanded to include a Blu-ray disc™ wizard, a PDF Preview option, and the ability to view label merge values in the label preview. In addition, QuickDisc users can create encrypted CD, DVD, and BD contents using 256 bit AES zip encryption compatible with PKZIP v4.5 and WinZip v9.0. Furthermore, files can now be larger than 4GB and filenames can be unicode and long names.

## VI. Additional Features

Rimage customers are no longer required to activate their Producer Software Suite. PSS v8.2 eliminates the need for customers to go through the activation process before using their new systems, making it even easier to get systems set up and producing discs.

Rimage's popular KnowledgeBase, first introduced last November, provides fast answers to users' questions and is now incorporated into all Rimage client application help menus and interfaces. The KnowledgeBase provides quick answers via text or video.

In addition to DDP v1.0 support, Rimage PSS v8.2 now offers support for DDP v2.0 and v2.1 formats.

## VIII. Availability & Contact Information

Rimage Producer Software Suite v8.2 began shipping in August 2009. This software is available to all existing software and hardware maintenance customers with active Rimage Maintenance contracts. Maintenance contract owners will receive their software shortly after general availability. If you need the latest copy of Producer Software Suite v8.2 urgently or have any questions about availability, please contact Rimage Technical Support at 800-553-8312 (option 2), to place an order.

Additional information about Rimage Producer Software Suite v8.2 is available from the following sources:

- Release Notes: [PSS v8.2 Release Notes](#)
- Technical Questions: Rimage Technical Support at 1-800-553-8312.
- Sales Inquires: Rimage Sales at 1-866-587-5903.
- Rimage Regional Business Manager
- E-mail: [sales@rimage.com](mailto:sales@rimage.com)
- Web: [www.rimage.com](http://www.rimage.com)

