

## Printable Surface Solutions

MAM-A has re-engineered its printable surface media to maximize printability for all the industry's leading CD-R and DVD-R printers. The newly engineered surfaces dramatically improve performance in all thermal transfer and ink jet disc printers, while decreasing the amount of printer resources required to achieve professional results.

 650  
700 MB

### → First Ever Full-Surface Printable Media

MAM-A was the first DVD-R manufacturer to provide full-surface printing on the face of the DVD disc. To solve the limitation of partial-surface printing, MAM-A made slight physical adjustments to the print side of all DVD-R discs while maintaining absolute integrity of the data area.

MAM-A is also the first to offer edge-to-edge printing capabilities on CD-R discs for the new Rimage Everest® printer. The Everest printer has the ability to print uninterrupted from the center hole to the outer edge of the CD or DVD, and MAM-A is offering media to take advantage of these unique features. The new printing process is called Variable Dot Re-transfer™ (Photo Realistic) printing, and offers print quality not possible until now.

### → Thermal Transfer Printable Discs

Our thermal transfer printable discs feature MAM-A's patented Diamond Coat™ technology for single color or Crystal Coat™ technology for full-color printing, both engineered specifically to match the performance characteristics of thermal printers.

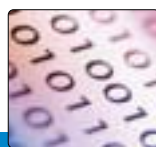
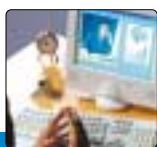
MAM-A offers a disc specifically designed for use with the Rimage Perfect Image® Producer line of products to combine professional silk-screening with your own customized information. Our unique silk-screening process will combine your graphics with the necessary Rimage® registration mark, so every disc will print perfectly aligned, full-color graphics with on-demand print.

### → Ink Jet Printable Discs

All of MAM-A's varieties of Ink Jet media have undergone extensive testing and been approved for use with CD-R Ink Jet printers offered by the industry's leading ink jet printer manufacturers, such as Primera Technology, Inc. The tested discs delivered undeniably exceptional results due to our super-porous coating which provides a stable foundation for ink adherence, allowing for true photo-quality images, along with extremely crisp and clear text and graphics. Extensive R&D efforts of our team of engineers have also resulted in a faster, more complete drying time, bleed-resistant surfaces and a whiter white coating for truer color representation. Also now available with uninterrupted edge-to-edge print surface.

### → Custom Silk-Screening

MAM-A offers in-house, custom silk-screening services for our high quality line of recordable discs, and you can receive your pre-printed media in the packaging option of your choice. Custom jewel case booklet and inlay cards, and bulk product artwork is also available.



## The Professional Series Printable Surface Solutions



100% Accuracy, even after 200 days sun exposure



Diamond Coat™ Protection

Approved by:

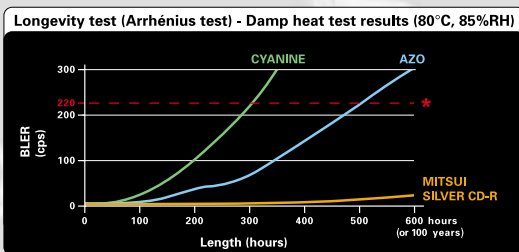


### → MAM-A Professional Series: 100% MAM-A

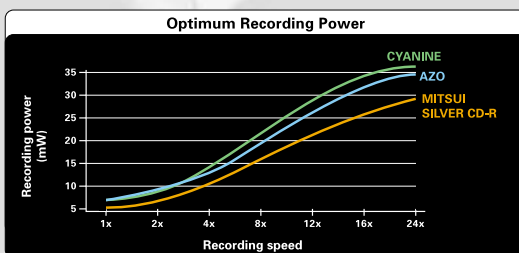


As one of the original manufacturers of CD-Rs, MAM-A has a long history of innovation and excellence in recordable media production. MAM-A, a global leader in CD-R industry has manufacturing facilities in the USA and France. Because MAM-A CD-R's are made from the company's own raw materials, discs benefit from a consistency and process control which no other manufacturer can equal.

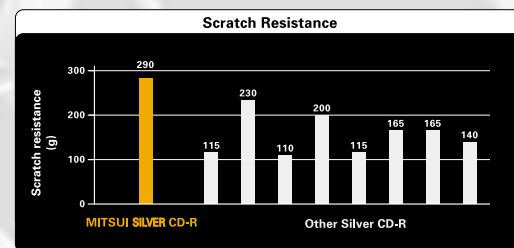
### → Technical specifications



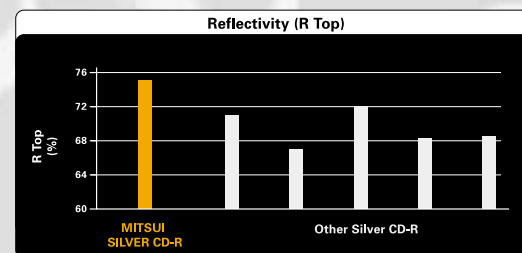
Mitsui CD-Rs offer long term storage integrity.



Mitsui CD-Rs require less recording power, thus expand the lifetime of your recorder.



Highly durable Diamond Coat protective surface makes Mitsui CD-Rs highly resistant.



Mitsui's Phthalocyanine Dye and silver reflective layer for best performance.

### → Packaging



### → Other characteristics

|  |                                    |                     |
|--|------------------------------------|---------------------|
|  | Available for thermal printing     | WHITE  GOLD  SILVER |
|  | Available for ink jet printing     | WHITE  GOLD  SILVER |
|  | Custom Silk Screening upon request |                     |

MAM-A U.S. Offices:

Manufacturing Facility • 10045 Federal Drive • Colorado Spr., CO 80908  
(888) MAM-DISC (888-626-3472)

E-mail: [info@mam-a.com](mailto:info@mam-a.com)

Internet: [www.mam-a.com](http://www.mam-a.com)

**MAM-A**  
The Difference is Innovation